

QuickBooks Study Guide



Dear Test Candidate,

In preparation for the QuickBooks Certified User exam, we've put together a set of practice exercises and example exam questions for you to review. What you'll find in this packet are:

- **Topic areas and objectives for the exam.**
- **Practice exercises with image assets.**
- **Practice exam items.**

We've assembled materials from the QuickBooks software to highlight a few of the more challenging techniques covered on the exam. You can work through these technical guides with the provided images included in each exercise. Additionally, we've included the certification objectives so that you are aware of the elements that are covered on the exam. Finally, we've included practice exam items to give you a feel for some of the questions covered on the certification exam.

These materials are meant to help you familiarize yourself with the areas of the exam but it is not comprehensive across all the objectives.

To find additional resources, visit www.certipoint.com/QuickBooks.

Thank you,
Certipoint, Inc.





Table of Contents

Exam Structure	5
Exam Objectives	6
Study Guide Activities	8
QuickBooks Exercises	
How to Add a Payroll Deduction	9
How to Create a Customer Statement	13
How to Issue a Vendor Credit in QuickBooks	15
How to Merge (Combine) Entries on a List	19
How to Progress Invoice	20
How to Send a Report from QuickBooks to Excel	23
Practice Exam Questions	30
Notes	35



Exam Structure

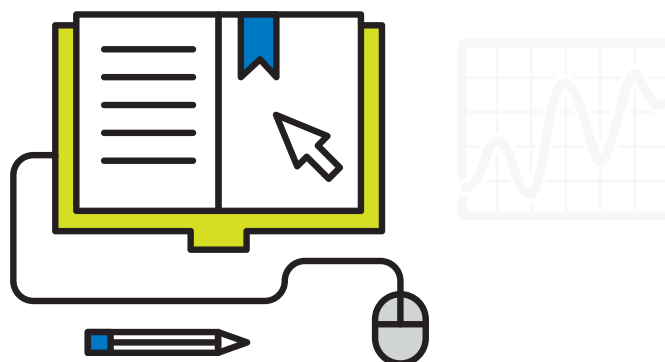
The following lists the topic areas and percentages of questions delivered in each topic area:

Topic Area	% of Exam
QuickBooks Setup	6%
QuickBooks Utilities and General Product Knowledge	10%
List Management	6%
Items	8%
Sales	10%
Purchases	10%
Payroll	12%
Reports	16%
Basic Accounting	10%
Customization/Saving Time	12%

Number of Questions, Time and Versions

- 50 questions
- 50 minutes
- Covers QuickBooks Desktop
- Multiple choice
- Online proctored exam

After taking the exam, your score is electronically reported and a PDF of your certificate will be located on your digital transcript. You can access your transcript once you are registered at www.certipoint.com.





Exam Objectives

Domain 1.0 QuickBooks Setup

A student should know:

- 1.1 What information is required before they set up a QuickBooks file
- 1.2 How to start a new company data file in QuickBooks (Easy Step Interview)
- 1.3 How to keep the lists and preferences from an old file while removing old transactions
- 1.4 How to customize the home page
- 1.5 How to set up lists (customers, vendors, items, etc.). This includes understanding which names and items should appear on which lists.

Domain 2.0 QuickBooks Utilities and General Product Knowledge

A student should know:

- 2.1 How to navigate or move around QuickBooks (use home page, menus, icon bar, etc.)
- 2.2 How to back up and restore a data file
- 2.3 How to determine the release number and how to update QuickBooks
- 2.4 How to use QuickBooks in single-user and multi-user mode
- 2.5 What versions and editions of QuickBooks are available for a specific year (desktop version)
- 2.6 How to password protect QuickBooks
- 2.7 How and why to use preferences

Domain 3.0 List Management

A student should know:

- 3.1 How to manage lists (customers, vendors, items, etc.). List management include:
 - 3.1.1 Adding new entries
 - 3.1.2 Deleting entries
 - 3.1.3 Editing entries
 - 3.1.4 Merging entries

Domain 4.0 Items

A student should know:

- 4.1 How QuickBooks uses items to perform the necessary accounting entries
- 4.2 The different types of items and when to use each type
- 4.3 How to use items for different types of scenarios. These include companies that sell:
 - 4.3.1 Products for a specified price
 - 4.3.2 Services for a specified price
 - 4.3.3 Unique products or services that have different prices for each sale
 - 4.3.4 One service or product

Domain 5.0 Sales

A student should know:

- 5.1 Who should be listed in the Customer Center

- 5.2 How to navigate and use the Customer Center
- 5.3 How to complete the workflow (from the sale to making the deposit) for:
 - 5.3.1 Invoicing (A/R)
 - 5.3.2 Sales Receipts (no A/R)
- 5.4 How QuickBooks uses the Undeposited Funds, Accounts Receivable, and checking accounts in the invoicing cycle.
- 5.5 How and why to record a customer credit
- 5.6 How and why to create statements
- 5.7 How to handle bounced (NSF) checks

Domain 6.0 Purchases

A student should know:

- 6.1 Who should be listed in the Vendor Center
- 6.2 How to navigate and use the Vendor Center
- 6.3 The different workflows for making purchases
 - 6.3.1 Entering and paying bills (A/P)
 - 6.3.2 Writing checks
 - 6.3.3 Using a Credit Card
 - 6.3.4 Using a Debit Card
- 6.4 How to record the transactions in the purchase workflows
- 6.5 How and why to record a Vendor credit
- 6.6 How to complete the inventory workflow (PO to payment)
- 6.7 How to set up, collect and pay sales tax
- 6.6 Bank reconciliation

Domain 7.0 Payroll

A student should know:

- 7.1 The differences between the Payroll Services available from QuickBooks
- 7.2 How to set up Payroll (including employees, Federal and State taxes and basic Payroll deductions) using the Payroll Setup Wizard.
 - 7.2.1 How to set up an employee's earnings and sick or vacation time
 - 7.2.2 How to track sick or vacation time (accruing hours and using "banked" hours)
- 7.3 How and why to setup Payroll Schedules

- 7.4 How to run Payroll
- 7.5 How and why to pay Payroll Liabilities
- 7.6 How to prepare payroll forms (941, W2) in QuickBooks
- 7.7 Track time and use it for payroll or for invoicing customers

Domain 8.0 Reports

A student should know:

- 8.1 Why and how to use the Report Center
- 8.2 How to customize reports (report modifications, collapsing subaccounts, etc.)
- 8.3 The basic question that each report answers (basic understanding of each report)
- 8.4 How and why to process multiple reports
- 8.5 How and why to send reports to Excel (understand and use the basic and advanced tab)
- 8.6 How and why to process multiple reports
- 8.7 How to memorize reports

Domain 9.0 Basic Accounting

A student should know:

- 9.1 What the basic financial statements are and have a basic understanding of what they mean.
- 9.2 The difference between cash and accrual reports
- 9.3 How and why to set a closing date
- 9.4 How to enter a Journal Entry if asked to do so by an accountant (they do not need to fully understand what accounts to debit or credit)

Domain 10.0 Customization/Saving Time and Shortcuts

A student should know:

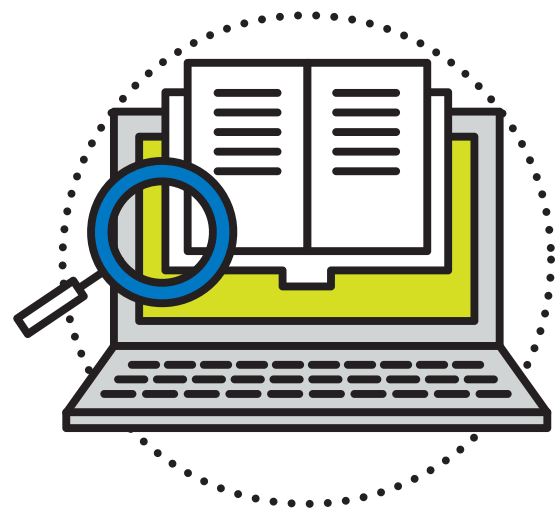
- 10.1 How and why to memorize transactions (automatically enter)
- 10.2 How to set up multiple users and what level of access can be granted or denied
- 10.3 How and why to create custom fields (customers, vendors, and employees)
- 10.4 How to customize an invoice



Study Guide Activities

This section of the study guide will provide guidance to complete key QuickBooks exercises that could be included on the certification exam. It will cover the following QuickBook exercises:

1. How to Add a Payroll Deduction
2. How to Create a Customer Statement
3. How to Issue a Vendor Credit in QuickBooks
4. How to Merge (Combine) Entries on a List
5. How to Create a Progress Invoice
6. How to Send a Report from QuickBooks to Excel



QuickBooks Exercises

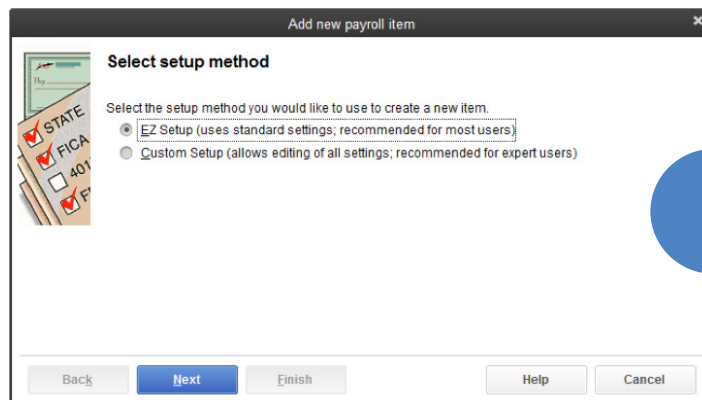
1. How To Add A Payroll Deduction

In this section, you create payroll items. A payroll item is anything that affects the amount of a paycheck. It also includes company expenses (like matched taxes). For instance, if you pay an employee a salary, it affects the amount of their paycheck and must be set up as a payroll item or a deduction for medical insurance. If you deduct it from an employee's check, it must be set up as a Payroll Item.

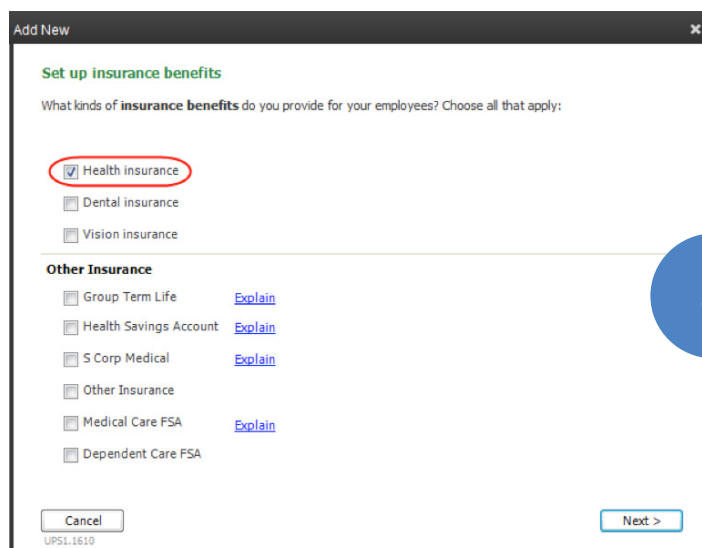
When you first set up payroll, the QuickBooks Payroll Setup wizard helps create your company's payroll items. However, as your needs change, you might need to add or edit payroll items. You learn how during this practice exercise.

Add Payroll Item

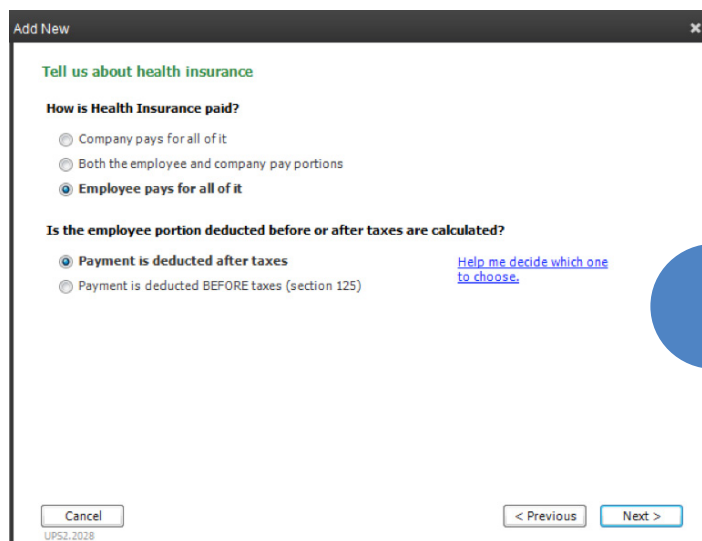
1. You decide to offer health insurance at your company. Add the payroll item. Click the Employees menu and select **Manage Payroll Items > New Payroll Item**.
2. Choose the **EZ Setup** method and click **Next**.
3. Select **Insurance Benefits** as the type and click Next.
4. QuickBooks loads the **Payroll Setup Interview**. Select **Health insurance**. Click **Next**.
5. QuickBooks asks how your company pays health insurance. In this case, the employee pays the full cost. Select the third option.
6. QuickBooks gives you two more choices. In this case, health insurance is an after-tax deduction, so click **Payment is deducted after taxes** and click **Next**. Please note: The only way you can deduct money before taxes are calculated is if Congress passed a law that allows you to do this. With certain health insurance plans, there is a law (Section 125) that allows health insurance deductions before taxes are calculated. If you're not sure, always check with an accountant.
7. Next, enter information about when and who you pay for the insurance. Click the **Payee** drop-down list and select **Sergeant Insurance**.



2



4



6

8. Enter account number 51233. This account number appears as the Memo on the Payroll Liability check QuickBooks creates when you pay **Sergeant Insurance**.
9. Then, enter the **Payment frequency** for the insurance. In this case, payment is due on the 15th of the month for the prior month's insurance. Click **Monthly**. This step is very important. If you don't set the frequency, the Liability will not show up in the "Pay Scheduled Liabilities" section of the Payroll Center. This means you may forget to pay it!
10. Then, click the drop-down list, select 15 and click **Next**.
11. Click **Finish**.

10

Add New

Set up the payment schedule for health insurance

Payee (Vendor): **Sergeant Insurance** [Explain](#)

Account #: **51233**
(The number the payee uses to identify you. Example: 99-99999X)

Payment frequency: ☐ Weekly, on **Monday** for the previous week's liabilities

☒ **Monthly, on the 15** day of the month for the previous month's liabilities

☐ Quarterly, on the **1** day of the month for the previous quarter's liabilities

☐ Annually, on **January** **1** for the previous year's liabilities

☐ I don't need a regular payment schedule for this item

Cancel **< Previous** **Next >**

UPS3.3689

Edit Payroll Item

1. To edit a payroll item, first open the Payroll Item List. Click the Employees menu and select **Manage Payroll Items > View/Edit Payroll Item List**.
2. Why do you need to edit the payroll item? The standard employee deduction for Health Insurance is \$50 per week. Did QuickBooks enter the rate for you? No. For this (and other reasons) we recommend that you always edit an item after you set it up. Double-click **Health Insurance**.
3. QuickBooks calls the deduction **Health Insurance (taxable)**. Change the name to **Medical Insurance**. The name you enter here will appear on paycheck and reports. So choose something you know your employees will recognize and understand. Click **Next**.
4. Now, enter the **Liability account** for the deduction. QuickBooks automatically points the deduction to an account called **Payroll Liabilities** (because this is money you owe). If you want more detail on financial statements, create subaccounts for payroll liabilities. Then, point individual payroll items to the subaccounts. Point the deduction to a subaccount called **Employee Health Insurance Payable** and click **Next**.

In the next few windows, you will just click next to get to the end of the Wizard. In most cases, you don't need to make any changes.

ITEM NAME	TYPE	AMOUNT	ANNUAL	TAX TRACKING	PAIDABLE TO	ACCOUNT ID
Salary	Yearly Salary			Compensation		
Sick Salary	Yearly Salary			Compensation		
Vacation Salary	Yearly Salary			Compensation		
Overtime Rate	Hourly Wage			Compensation		
Regular Pay	Hourly Wage			Compensation		
Sick Hourly	Hourly Wage			Compensation		
Vacation Hourly	Hourly Wage			Compensation		
Bonus	Addition	0.00		Compensation		
Mileage Reimb.	Addition	0.45		Compensation		
Health Insurance	Deduction	0.00	-1,200.00	None	Sergeant Insurance	51233
Health Insurance (taxable)	Deduction	0.00		None	State Fund	
Workers Compensation	Company Contribution			None	Great Statewide Bank	00-7904153
Advance Earned Income Credit	Federal Tax			Advance EIC Payment	Great Statewide Bank	00-7904153
Federal Unemployment	Federal Tax	0.6%	7,000.00	FUTA	Great Statewide Bank	00-7904153
Federal Withholding	Federal Tax			Federal	Great Statewide Bank	00-7904153
Medicare Company	Federal Tax	1.45%		Comp. Medicare	Great Statewide Bank	00-7904153

Payroll Item **Activities** **Reports** **Include Inactive**

1

Edit payroll item (Deduction: Medical Insurance)

Name used in paychecks and payroll reports

Enter name for deduction: **Medical Insurance**

For example, if you are creating a deduction for employee 401(k) plan, you may want to call it '401(k)'.

☐ Track Expenses By Job
To track expenses by customer and job, by class, and by service item, select the checkbox. For more information, click Help.

☐ Payroll item is inactive
To hide this item on the Payroll Item list, select the checkbox.

Back **Next** **Finish** **Help** **Cancel**

3

Edit payroll item (Deduction: Medical Insurance)

Agency for employee-paid liability

Enter name of agency to which liability is paid: **Sergeant Insurance**

Enter the number that identifies you to agency: **51233**

Liability account (employee-paid): **Payroll Liabilities: Emp. Health Ins Payable**

This liability account tracks deductions to be paid. You can change this account at any time.

Back **Next** **Finish** **Cancel**

4

5. In Tax tracking type window, specify how to classify the deduction on tax forms. QuickBooks enters the correct information, so click **Next**.

Edit payroll item (Deduction: Medical Insurance)

Tax tracking type

The tax tracking type determines how the payroll item appears on tax forms. Be sure to choose the correct tax tracking type to ensure that your forms are correct.

None

Are you sure you want 'None' as the tax tracking type?

'None' is typically used for payroll items such as net additions, deductions, or company contributions that don't affect taxes or tax forms. These include items such as expense reimbursements, miscellaneous after-tax fees, employee loans, and charitable contribution deductions.

If you want to report this payroll item on your tax forms, choose a different tax tracking type.

Back Next Finish Cancel

6. In the Taxes window, enter how the deduction affects taxes in this window. Again, QuickBooks enters the information for you, so click **Next**.

Edit payroll item (Deduction: Medical Insurance)

Taxes

Based on the tax tracking type you've chosen, QuickBooks automatically selects the taxes that are almost always affected by this payroll item. In most cases, you don't need to change the selections you see here.

☒ PAYROLL ITEM

- ☐ Federal Unemployment
- ☐ Federal Withholding
- ☐ Medicare Company
- ☐ Medicare Employee
- ☐ Social Security Company
- ☐ Social Security Employee

Click Default to revert to QuickBooks automatic settings.

Default

Back Next Finish Help Cancel

7. Do you base the insurance deduction on a quantity or hours, or neither? In this case, select **Neither** and click **Next**.

Edit payroll item (Deduction: Medical Insurance)

Calculate based on quantity

☐ Calculate this item based on quantity

Select this item if you want this payroll item to be calculated based on a quantity that you enter manually on paychecks.

☐ Calculate this item based on hours

Select this item if you want this payroll item to be calculated based on the Regular Pay and Overtime Pay hours worked.

☐ Include Sick and Vacation hours

☒ **Neither**

Select this item if you want this payroll item to be based on a percent of Net or Gross, or a flat amount per paycheck.

Back Next Finish Help Cancel

8. In the **Gross vs. net** window, identify how QuickBooks calculates the deduction based on **gross pay**, or based on **net pay**. **Medical Insurance** is not calculated, it's a flat amount per paycheck. In this window, you also specify how the deduction appears on payroll reports, subtracted directly from **gross pay**, or subtracted from **net pay**. QuickBooks already specified that this is a **net pay** deduction. Click **Next**.

Edit payroll item (Deduction: Medical Insurance)

Gross vs. net

Select whether to calculate on

☐ gross pay

☒ **net pay**

If the rate is a percentage, this item will be calculated based on gross or net pay.

Back Next Finish Help Cancel

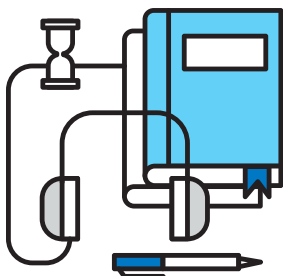


9. In the **Default Rate and Limit** window, enter the **Default** rate and limit for the deduction. **Default** means you CAN change the information later, if necessary. Enter the amount of \$50 per paycheck. QuickBooks will use this number when you assign this Medical Insurance deduction to an employee. But if necessary, you can change the amount for each employee (e.g. if an employee wants to add their spouse or child).

10. If there is an annual limit, enter it in the second box. There is no annual limit for the **Medical Insurance**, so leave the box blank. Note: If you do enter a limit, specify whether it is an annual limit by checking this box. In this case there is no limit for the medical insurance, so make sure the box is unchecked.

11. Click **Finish**.

12. When you set up or edit an employee's record, you enter this deduction on the Payroll and compensation info tab below Additions Deductions and Company Contributions.



ITEM NAME	AMOUNT	LIMIT
Health Insurance	-12.50	-400.00

2. How To Create A Customer Statement

Sometimes you want to send statements to customers to remind them of overdue balances, or to list statement charges a customer owes.

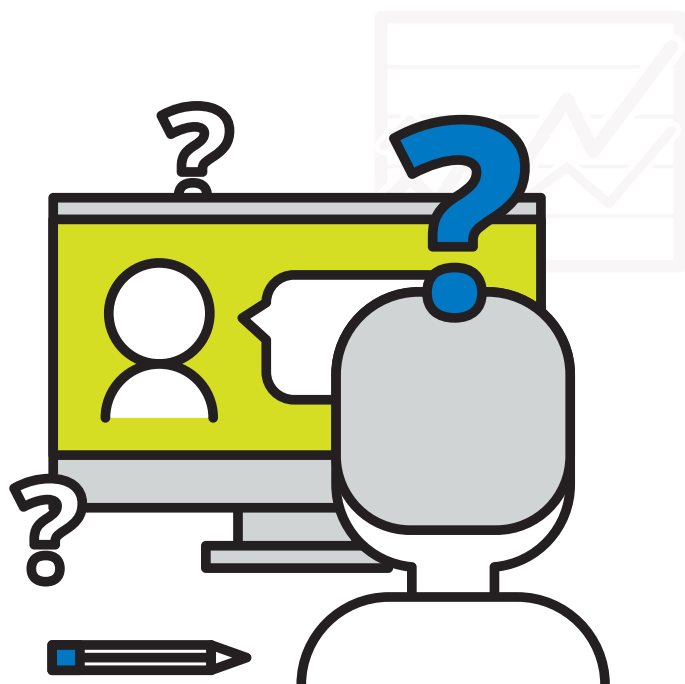
There are two types of statements in QuickBooks. The first is called an Open Transaction Statement. This example shows only open transactions as of the statement date. This way, a customer knows exactly how much they owe you but doesn't see the history of payments and credits.

The second type of statement is called "Activity Based". This shows you the customer's activity over a period of time, including payments and credits. In this exercise you prepare an Open Transaction Statement and a list of customer's activity over a period of time.

Customer Statements: Process An Open Transaction Statement

1. From the Home page, click the **Statements** icon.
2. In the Select Statement Options section, select a type of statement. Select **All open transactions as of Statement Date**. This statement shows only open transactions as of a specific date.
3. Click **One Customer**.
4. Click the drop-down list and select **Brian Cook**.
5. Click **Preview**.
6. Click the mouse to Zoom in.
7. This statement shows only what the customer owes you. The description shows the original invoice amount, and the **Amount** column shows the unpaid portion of the invoice.
8. Prepare this type of statement if your customer only wants to see outstanding balances without the detail. Click **Close**.

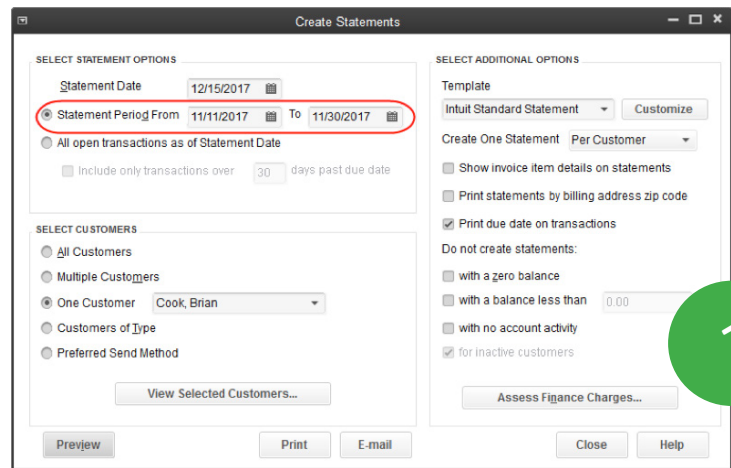
UIM	Date	Transaction	Amount	Balance
		2nd story addition- INV #1081. Due 12/25/2018. Orig. Amount \$5,418.00.	5,418.00	5,418.00
		Kitchen- INV #1066. Due 11/14/2018. Orig. Amount \$3,100.00.	700.00	6,118.00
		INV #1080. Due 12/25/2018. Orig. Amount \$1,636.69.	1,636.69	7,754.69
		INV #PC 6. Due 01/10/2019. Orig. Amount \$5.95. Finance	5.95	7,760.64
		Charge INV #1098. Due 01/14/2019. Orig. Amount \$1,636.69.	1,636.69	9,397.33



Customer Statements : Process A Customer Activity Statement

1. Brian Cook claims he sent a check that wasn't applied to his account. Prepare a statement that shows his activity over a date range. In the Statement Options section, select Statement Period From.
2. Enter a date of **November 1st, 2017** to **November 30th, 2017**.
3. In the Select Customers section, select **Brian Cook**.
4. Click the **Preview** button.
5. Click the mouse to **Zoom In**.
6. An **Activity-Based Statement** shows all customer account transactions during the time period. Note: it only shows Accounts Receivable transactions which include invoices, payments, statement charges and credit memos. It does not show Sales Receipts or cash transactions.

Prepare this type of statement if your customer wants to see the transactions that make up their outstanding balance. This statement also shows the aging periods. Click **Close**.



Create Statements

SELECT STATEMENT OPTIONS

Statement Date: 12/15/2017

☒ Statement Period From: 11/1/2017 To: 11/30/2017

☐ All open transactions as of Statement Date

☐ Include only transactions over: 30 days past due date

SELECT CUSTOMERS

☐ All Customers

☐ Multiple Customers

☒ One Customer: Cook, Brian

☐ Customers of Type

☐ Preferred Send Method

View Selected Customers...

SELECT ADDITIONAL OPTIONS

Template: Intuit Standard Statement Customize

Create One Statement Per Customer

☐ Show invoice item details on statements

☐ Print statements by billing address zip code

☒ Print due date on transactions

Do not create statements:

☐ with a zero balance

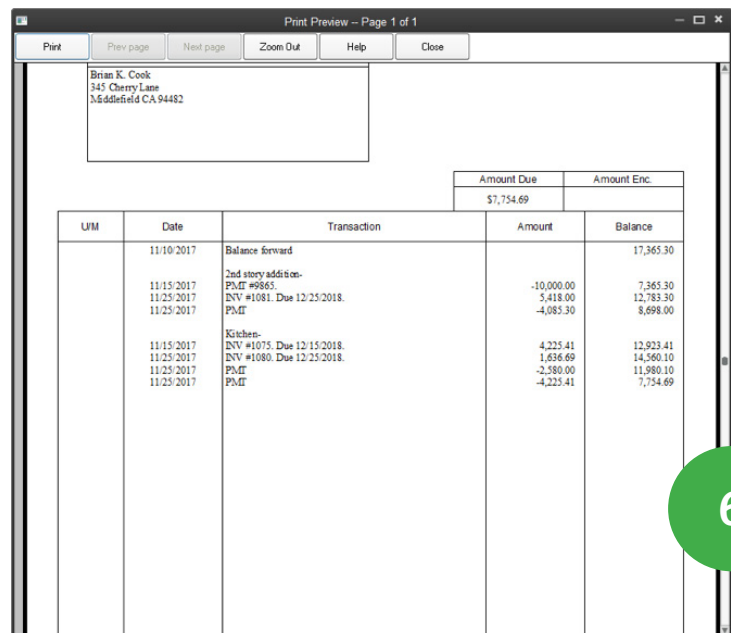
☐ with a balance less than: 0.00

☐ with no account activity

☒ for inactive customers

Assess Finance Charges...

Preview Print E-mail Close Help



Print Preview -- Page 1 of 1

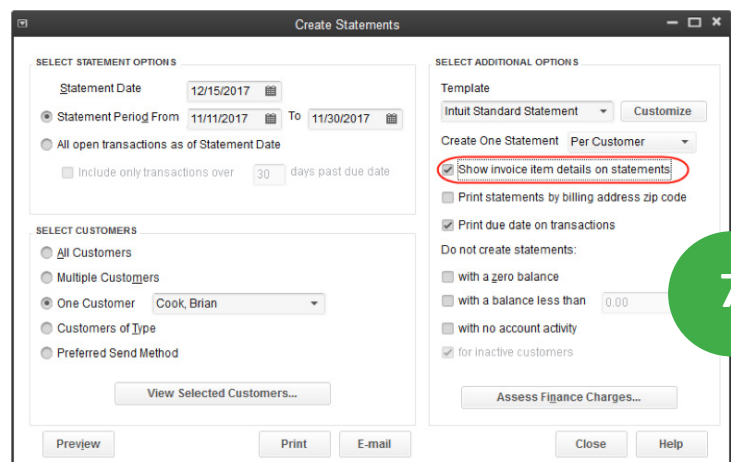
Brian K. Cook
345 Cherry Lane
Middlefield CA 94482

		Amount Due	Amount Enc.
		\$7,754.69	

UIM	Date	Transaction	Amount	Balance
	11/10/2017	Balance forward		17,365.30
	11/15/2017	2nd story addition- PMT #9065	-10,000.00	7,365.30
	11/25/2017	INV #1081 Due 12/25/2018 PMT	5,418.00	12,783.30
	11/25/2017	PMT	-4,085.30	8,698.00
	11/15/2017	Kitchen- INV #1075 Due 12/15/2018	4,225.41	12,923.41
	11/25/2017	INV #1080 Due 12/25/2018	1,636.69	14,560.10
	11/25/2017	PMT	-2,580.00	11,980.10
	11/25/2017	PMT	-4,225.41	7,754.69

Print Prev page Next page Zoom Out Help Close

7. What if **Brian Cook** reviews his statement but can't find the invoice you sent earlier, so he wants to see the detail of each invoice. Click the box next to **Show invoice item details on statements**.
8. Click **Preview**.

Create Statements

SELECT STATEMENT OPTIONS

Statement Date: 12/15/2017

☒ Statement Period From: 11/1/2017 To: 11/30/2017

☐ All open transactions as of Statement Date

☐ Include only transactions over: 30 days past due date

SELECT CUSTOMERS

☐ All Customers

☐ Multiple Customers

☒ One Customer: Cook, Brian

☐ Customers of Type

☐ Preferred Send Method

View Selected Customers...

SELECT ADDITIONAL OPTIONS

Template: Intuit Standard Statement Customize

Create One Statement Per Customer

☒ Show invoice item details on statements

☐ Print statements by billing address zip code

☒ Print due date on transactions

Do not create statements:

☐ with a zero balance


☐ with a balance less than: 0.00

☐ with no account activity

☒ for inactive customers

Assess Finance Charges...

Preview Print E-mail Close Help

- 

9

2

6

7. Next, click the drop-down list and select **Freight & Delivery** as the **Account**.
8. How does this credit affect the vendor's balance? Before you save this credit, let's look at how much you owe the vendor. From the Home page, click the **Vendor Center** icon.
9. Select **Perry's Windows & Doors** from the list. Before recording this credit, you owe them **\$6,705.00**
10. Click the **Window** menu and select **Enter Bills** to return to the credit memo.
11. Click **Save & Close** to save the credit memo.

New Vendor... New Transactions

Vendors Transactions

Active Vendors

NAME	BALANCE TOTAL	ATTACH
Keswick Insulation	0.00	
Larson Flooring	0.00	
Lew Plumbing	1,330.00	
Madrid, Winnie	0.00	
Mason, Elizabeth	0.00	
McClain Appliances	0.00	
Mendoza Mechanic...	0.00	
Middlefield Drywall	1,200.00	
Miller, Dan	0.00	
Pacific Paint Suppl...	0.00	
Patton Hardware S...	4,479.20	
Perry Windows & ...	6,705.00	
QuickBooks Maste...	0.00	

9

12. Now look at the balance for **Perry** in the Vendor Center. Now you only owe them **\$5,705.00**.
13. In the next exercise, you apply the credit against bills you owe the vendor.

Vendors Transactions

Active Vendors

NAME	BALANCE TOTAL	ATTACH
Keswick Insulation	0.00	
Larson Flooring	0.00	
Lew Plumbing	1,330.00	
Madrid, Winnie	0.00	
Mason, Elizabeth	0.00	
McClain Appliances	0.00	
Mendoza Mechanic...	0.00	
Middlefield Drywall	1,200.00	
Miller, Dan	0.00	
Pacific Paint Suppl...	0.00	
Patton Hardware S...	4,479.20	
Perry Windows & ...	5,705.00	
QuickBooks Maste	0.00	

12



Apply A Credit Memo

14 To apply the credit memo against specific bills, first look at **Perry Windows & Doors'** balance in more detail. Click the **Open Balance** link on the right side of the Vendor Center.

15. The **Vendor Open Balance** report lists each unpaid bill and credit memo for a vendor. It shows you what transactions make up a vendor's balance.

When you enter a credit memo, QuickBooks does not know which bill to apply it against. You tell QuickBooks which bill to apply the credit to in the Pay Bills window. Click the Home page icon to bring it to the front of the screen.

16. Click the **Pay Bills** icon.

17. Use this window to apply vendor credits. Here are two bills for **Perry Windows & Doors**. Pay the first bill. Click the box in the left-most column to select the bill.

18. QuickBooks shows credit applied to the bill in the Credits Used column.

Note that QuickBooks applies all **\$1,000** of the credits automatically against the first bill. Why did it do this automatically? Because of a preference that tells QuickBooks to automatically apply credits. To set this preference click **Edit > Preferences**. Then click the Bills icon and click the Company Preferences tab. Set the preference in that window.

In this case, suppose you want to only apply \$500 credit against the first bill, and the remaining \$500 against the second bill.

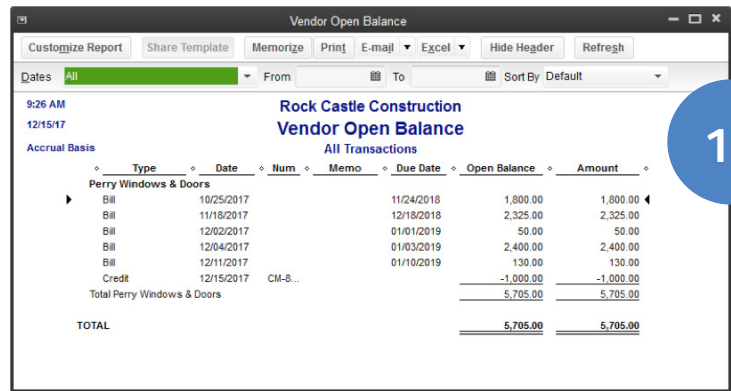
19. First, select the bill to which QuickBooks has already applied the credits. Next, click the **Set Credits** button.

20. QuickBooks lists the credits. The checkmark means that QuickBooks applied the credit against bill number 888.

Click in the Amount to Use field and enter \$500.00.

21. Click **Done**.

22. Click the box for the 2nd bill from **Perry's Windows & Doors** to select it for payment.



Vendor Open Balance

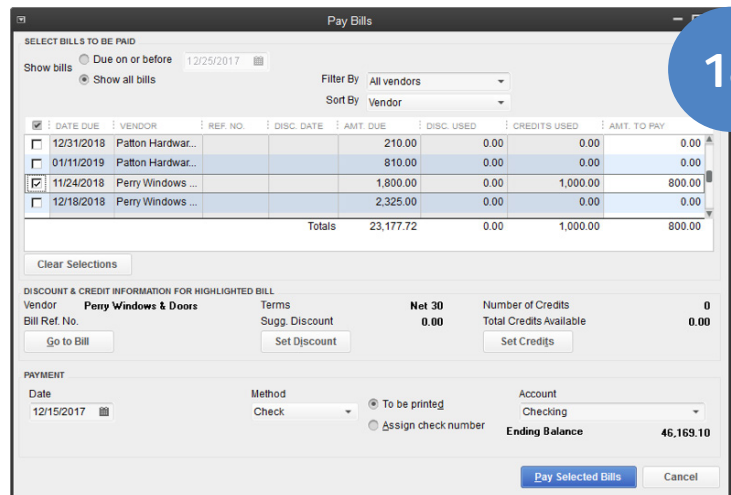
Rock Castle Construction

Vendor Open Balance

All Transactions

Type	Date	Num	Memo	Due Date	Open Balance	Amount
Bill	10/25/2017			11/24/2018	1,800.00	1,800.00
Bill	11/18/2017			12/18/2018	2,325.00	2,325.00
Bill	12/02/2017			01/01/2019	50.00	50.00
Bill	12/04/2017			01/03/2019	2,400.00	2,400.00
Bill	12/11/2017			01/10/2019	130.00	130.00
Credit	12/15/2017	CM-8...			-1,000.00	-1,000.00
Total Perry Windows & Doors					5,705.00	5,705.00
TOTAL					5,705.00	5,705.00

15



Pay Bills

SELECT BILLS TO BE PAID

Show bills: ☐ Due on or before 12/25/2017 ☒ Show all bills

Filter By: All vendors Sort By: Vendor

DATE DUE	VENDOR	REF. NO.	DISC. DATE	AMT. DUE	DISC. USED	CREDITS USED	AMT. TO PAY
12/31/2018	Patton Hardwar...			210.00	0.00	0.00	0.00
01/11/2019	Patton Hardwar...			810.00	0.00	0.00	0.00
11/24/2018	Perry Windows ...			1,800.00	0.00	1,000.00	800.00
12/18/2018	Perry Windows ...			2,325.00	0.00	0.00	0.00
Totals				23,177.72	0.00	1,000.00	800.00

DISCOUNT & CREDIT INFORMATION FOR HIGHLIGHTED BILL

Vendor: **Perry Windows & Doors** Terms: **Net 30** Number of Credits: **0**

Bill Ref. No.: Sugg. Discount: **0.00** Total Credits Available: **0.00**

Go to Bill Set Discount Set Credits

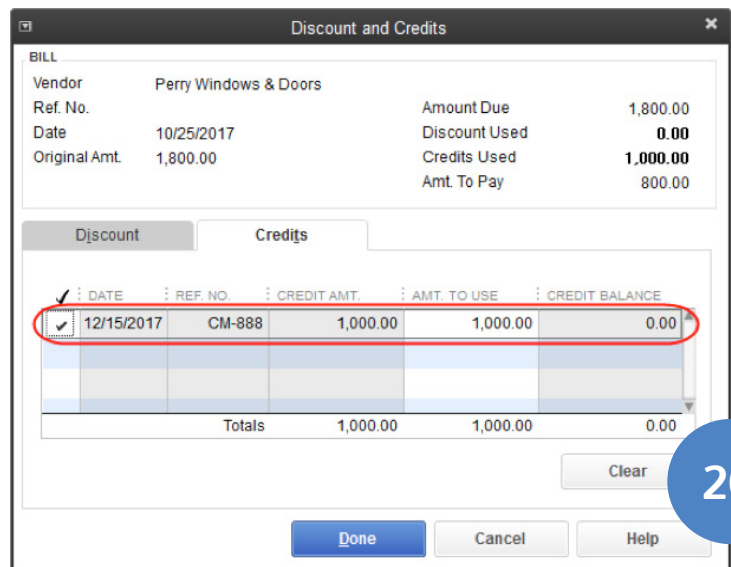
PAYMENT

Date: 12/15/2017 Method: Check ☒ To be printed ☐ Assign check number Account: Checking

Ending Balance: 46,169.10

Pay Selected Bills Cancel

18



Discount and Credits

BILL

Vendor: Perry Windows & Doors

Ref. No. Amount Due: 1,800.00

Date: 10/25/2017 Discount Used: 0.00

Original Amt. 1,800.00 Credits Used: 1,000.00

Amt. To Pay: 800.00

Discount Credits

DATE	REF. NO.	CREDIT AMT.	AMT. TO USE	CREDIT BALANCE
12/15/2017	CM-888	1,000.00	1,000.00	0.00
Totals		1,000.00	1,000.00	0.00

Clear

Done Cancel Help

20

23. QuickBooks automatically applies the remaining credit against the bill.

23

24. You are paying with a check that is To be printed. Note: You could also pay with a credit card (if you set one up on the chart of accounts). Click the **Pay Selected Bills** button.

24

25. Click Done in the Payment Summary window.
26. Review the effect of the bill payment on the Open Balance Report. Select **Window > Vendor Open Balance** from the menu.

25

27. The two bills and two credits do not appear on the report. That's because you applied the credits against the bills and then paid the bills.
28. Close the windows.

27

4. How To Merge (Combine) Entries On A List

You'll probably come across this real-world scenario. Someone accidentally enters the same "thing" (name, account, etc.) on a list by accident. This often happens because they misspell the entry. Now you have a problem. The list contains duplicate entries for the same thing. For example, you already had a vendor named "Cal Telephone" and someone else entered a check for "CA Phone". The same vendor is now represented twice in the list. This exercise will show you how to fix that error by merging two entries on the Vendor List (note: this technique works on other lists too with some exceptions - mentioned later).

1. From the Home page, click the **Vendor Center**.
2. Notice there are 2 names (CA Phone and Cal Telephone).

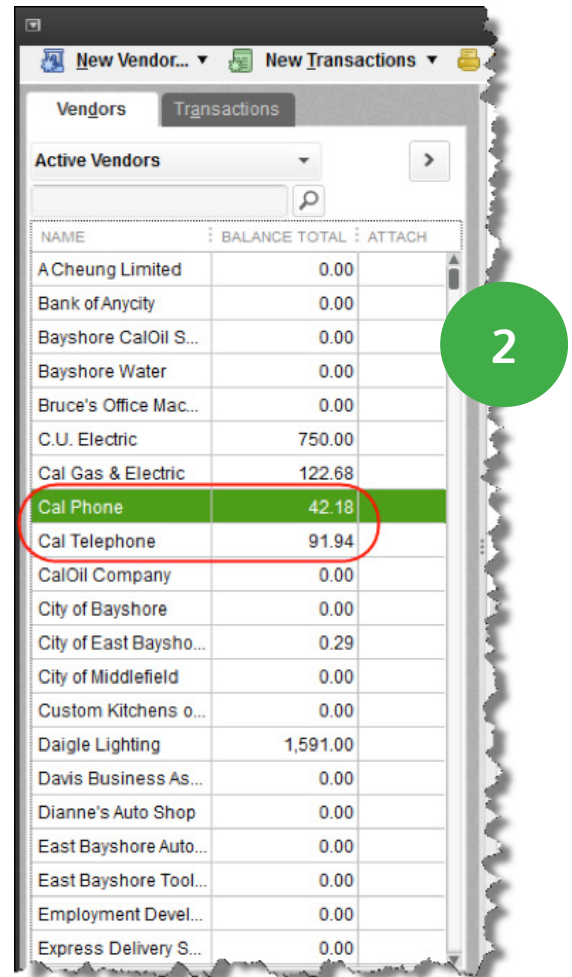
You want to keep **Cal Telephone** and merge **CA Phone** and all the associated transactions into **Cal Telephone**.

Note: if there were no transactions, you could delete an unwanted name, but that is not the case here. Let's merge the two names into one. Think of Merging as Combining because Merging effectively combines names on a list. Double-click on CA Phone (the entry you want to get rid of).

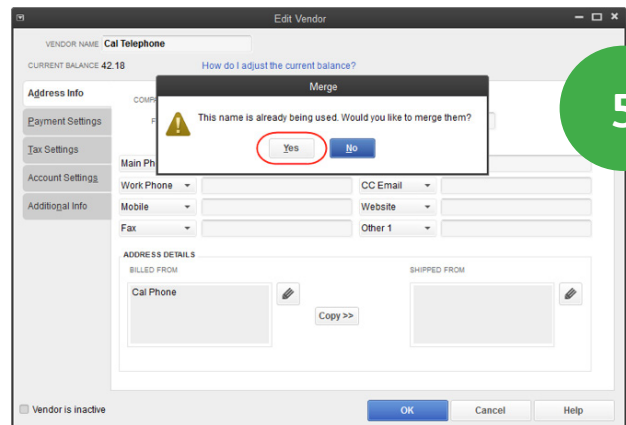
3. Type the correct name, **Cal Telephone**.
4. Click **OK**.
5. Click **Yes** to merge the two names.

Now only the correct name, Cal Telephone, appears on the list.

QuickBooks also merged the history (all the transactions) for the two names. That means checks written to both of the vendors are now included in the history for **Cal Telephone**.



NAME	BALANCE TOTAL	ATTACH
A Cheung Limited	0.00	
Bank of Anycity	0.00	
Bayshore CalOil S...	0.00	
Bayshore Water	0.00	
Bruce's Office Mac...	0.00	
C.U. Electric	750.00	
Cal Gas & Electric	122.68	
Cal Phone	42.18	
Cal Telephone	91.94	
CalOil Company	0.00	
City of Bayshore	0.00	
City of East Baysho...	0.29	
City of Middlefield	0.00	
Custom Kitchens o...	0.00	
Daigle Lighting	1,591.00	
Davis Business As...	0.00	
Dianne's Auto Shop	0.00	
East Bayshore Auto...	0.00	
East Bayshore Tool...	0.00	
Employment Devel...	0.00	
Express Delivery S...	0.00	



VENDOR NAME: Cal Telephone

CURRENT BALANCE: 42.18

How do I adjust the current balance?

Merge

⚠ This name is already being used. Would you like to merge them?

☒ Yes ☐ No

Address Info: Main Ph, Work Phone, Mobile, Fax, CC Email, Website, Other 1

ADDRESS DETAILS: BILLED FROM (Cal Phone), SHIPPED FROM

Copy >>

Vendor is inactive

OK Cancel Help



Note: There are two restrictions to merging.


First, QuickBooks does not allow you to merge names on several lists. For example, you cannot merge entries on the **Customer Message List**.

The second restriction only applies to lists with a **Type** column, like the **Chart of Accounts**. You can only merge names of the same type. For example, you can merge one **expense** account with another **expense** account, but can't merge an **expense** account with an **income** account.

5. How To Progress Invoice

Sometimes your company might have a job that takes months or even years to finish. Do you wait until the job is finished to start invoicing? In most cases you want to be paid for the work you've completed. This process is called Progress Invoicing. Essentially, you invoice in increments based on an estimate. In this exercise, assume you have already created an estimate for \$3,114 for your customer Kristy Abercrombie.

1. First, make sure to turn the progress invoice feature on. To do this click Edit > Preferences and click the Jobs & Estimates icon. Click the Company Preferences tab. In this window select "yes" below "Do you create estimates?" And select "yes" below "Do you do progress invoicing?"



New Vendor...		New Transactions	
Vendors		Transactions	
Active Vendors			
NAME	BALANCE TOTAL	ATTACH	
A Cheung Limited	0.00		
Bank of Anycity	0.00		
Bayshore CalOil S...	0.00		
Bayshore Water	0.00		
Bruce's Office Mac...	0.00		
C.U. Electric	750.00		
Cal Gas & Electric	122.68		
Cal Telephone	134.12		
CalOil Company	0.00		


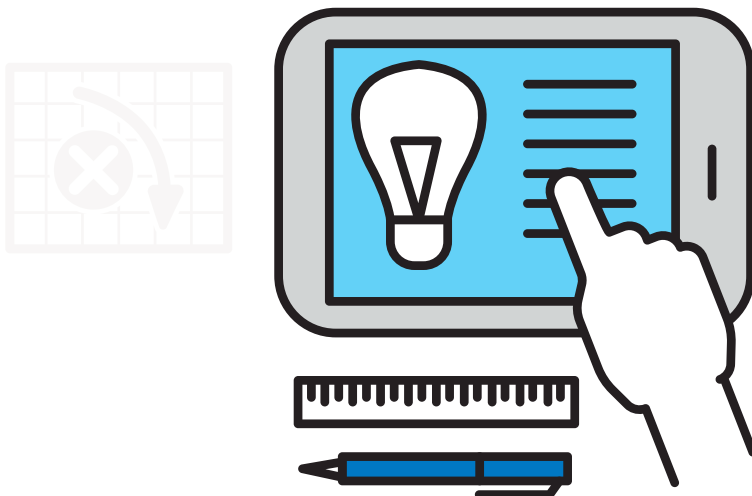


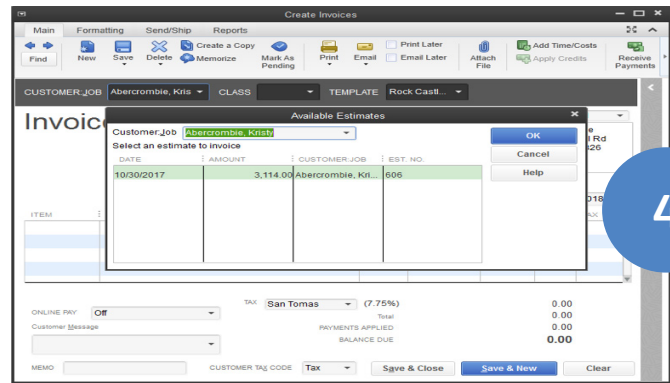
Chart of Accounts	
NAME	TYPE
↳ Less Discounts given	Income
↳ Materials Income	Income
↳ Subcontracted Labor Income	Income
↳ Reimbursement Income	Income
↳ Mileage Income	Income
↳ Permit Reimbursement Income	Income
↳ Reimbursed Freight & Delivery	Income
↳ Cost of Goods Sold	Cost of Goods Sold
↳ Job Expenses	Cost of Goods Sold
↳ Bond Expense	Cost of Goods Sold
↳ Equipment Rental	Cost of Goods Sold
↳ Freight & Delivery	Cost of Goods Sold
↳ Job Materials	Cost of Goods Sold
↳ Less Discounts Taken	Cost of Goods Sold
↳ Permits and Licenses	Cost of Goods Sold
↳ Subcontractors	Cost of Goods Sold
↳ Automobile	Expense
↳ Fuel	Expense
↳ Insurance	Expense
↳ Repairs and Maintenance	Expense
↳ Bad debt	Expense
↳ Bank Service Charges	Expense
↳ Depreciation Expense	Expense



2. Prepare an invoice based on the **Kristy Abercrombie** estimate. Click the Create Invoices icon.
3. Click the **Customer:Job** drop-down arrow and select the Kristy Abercrombie job.
4. QuickBooks opens the **Available Estimates** window.

Select an estimate to convert it to an invoice.
Select estimate number 606.

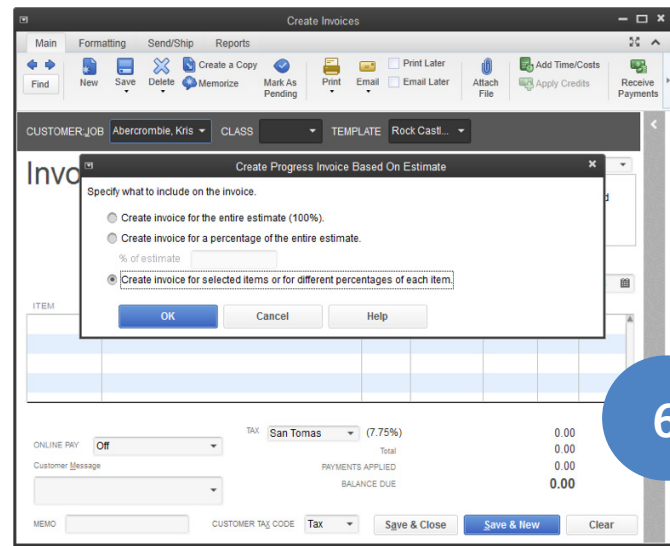
5. Click **OK**.



4

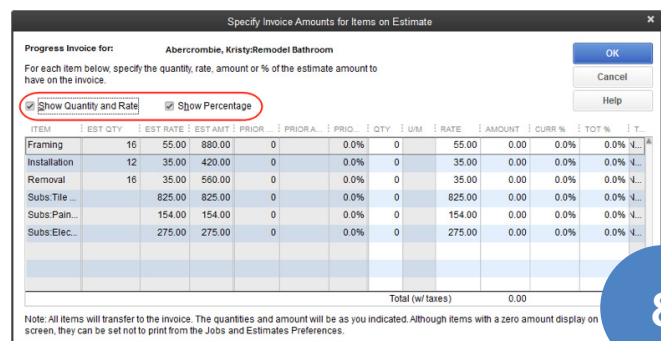
6. QuickBooks opens the **Create Progress Invoice Based on Estimate** window. **Progress Invoicing** means you invoice against the estimate in increments until the job or contract is complete. If you choose the first option, Create invoice for the entire estimate, QuickBooks copies all line items and quantities from the estimate to the invoice. The second choice lets you invoice a percentage of the estimate. The third choice lets you specify the items and quantities to transfer from the estimate to the invoice. In this case, select the third option.

7. Click **OK**.



6

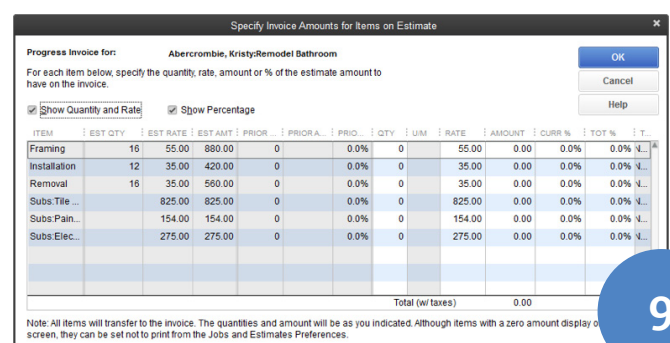
8. Decide which items and quantities to invoice. Click the **Show Quantity and Rate** and the **Show Percentage** boxes.



8

9. The first four columns show information from the Estimate. The next three columns show anything already invoiced for the job. The last six columns show what you want to charge the customer on this invoice.

To transfer an item to the invoice, enter a Quantity, Amount, or Percentage. In this case, enter 3 quantities. For the first line item, enter 5 for Framing.



9

10. For the second line item, enter that you installed 5 Frames.
11. For the third line item, enter that you removed 5 Frames.
12. Click **OK**.
13. QuickBooks copies the selected items to the invoice.
To print the invoice later, select the **To be printed** checkbox.
14. Click **Save & Close**.

13

Create Invoices

Main Formatting Send/Ship Reports

Find New Save Delete Create a Copy Memorize Mark As Pending Print Email Print Later Email Later Attach File Add Time/Costs Apply Credits Progress

CUSTOMER: JOB Abercrombie, Kris CLASS Remod... TEMPLATE Rock Castl...

Invoice

DATE 12/15/2017 INVOICE # 1100

BILL TO Kristy Abercrombie 5647 Cypress Hill Rd Bayshore CA 94326

SHIP TO Ship To 1 Kristy Abercrombie 5647 Cypress Hill Rd Bayshore, CA 94326

TERMS Net 30 DUE DATE 01/14/2018

ITEM	DESCRIPTION	QUANT.	U/M	RATE	AMOUNT	TAX
Framing	Framing labor	5		55.00	275.00	Non
Installation	Installation labor	5		35.00	175.00	Non
Removal	Removal labor	5		35.00	175.00	Non

ONLINE PAY Off

TAX San Tomas (7.75%) 0.00

Customer Message

PAYMENTS APPLIED 0.00

BALANCE DUE 625.00

MEMO CUSTOMER TAX CODE Tax

Save & Close Save & New Clear



6. How To Send A Report From Quickbooks To Excel

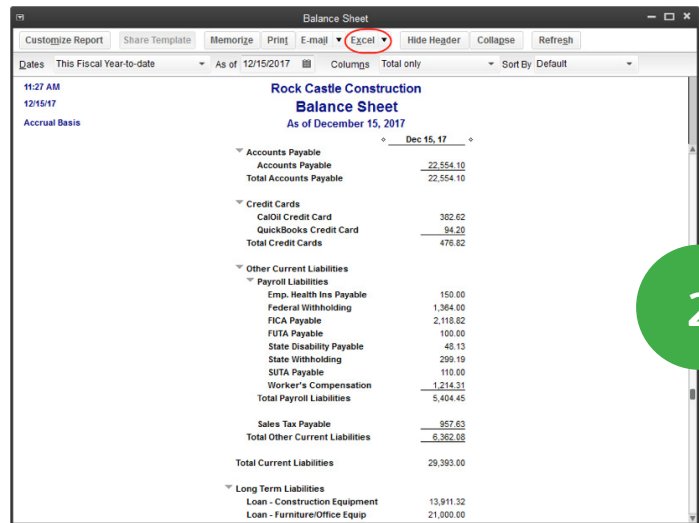
QuickBooks has powerful reporting capabilities. However, there are some report functions and modifications that QuickBooks cannot perform. For example, if a QuickBooks report does not total a column or row, you can't add the calculation yourself. You also can't rename column or row headings. There is a way around this, however. You can send a report from QuickBooks to Microsoft Excel to take advantage of the unique features Excel offers.

In this lesson you export a report to Excel, learn how to make calculations and modifications to get more from your data, and learn how to outline and filter report data to improve report presentation and find information faster.

Export Report To Excel

1. To begin, open the report you want to export to Excel. For example, to export the Balance Sheet, from the Home page click **Reports > Company & Financial > Balance Sheet Standard**.
2. Click the **Excel** button and choose to **Create New Worksheet** in Excel.
3. You have three choices for the export. You can **Create a new worksheet** in a new workbook, or **in an existing workbook**. Second you can **Update an existing worksheet**. Or third you can send the report to a comma separated values file. Do this if you do not have Microsoft Excel on your computer. .
4. Choose to create a new worksheet in a new workbook.
5. Click the **Export** button.
6. QuickBooks automatically starts Microsoft Excel and copies the report to a new spreadsheet in a new workbook. Any changes made here do NOT affect your QuickBooks data. The labels are text fields that you can change.

Click on the word **Assets** and type **Stuff Worth Money**.



Balance Sheet

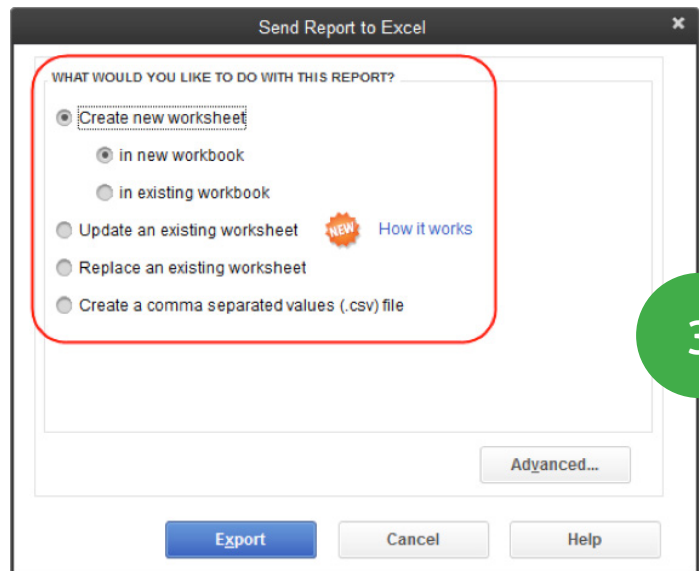
Rock Castle Construction

Balance Sheet

As of December 15, 2017

Dec 15, 17

Accounts Payable	22,554.10
Accounts Payable	22,554.10
Total Accounts Payable	
Credit Cards	362.62
CalOil Credit Card	34.20
QuickBooks Credit Card	
Total Credit Cards	478.62
Other Current Liabilities	
Payroll Liabilities	
Emp. Health Ins Payable	150.00
Federal Withholding	1,364.00
FICA Payable	2,118.62
FUTA Payable	100.00
State Disability Payable	48.13
State Withholding	299.19
SUTA Payable	110.00
Worker's Compensation	1,214.31
Total Payroll Liabilities	5,404.45
Sales Tax Payable	857.63
Total Other Current Liabilities	6,362.68
Total Current Liabilities	29,393.00
Long Term Liabilities	
Loan - Construction Equipment	13,911.32
Loan - Furniture/Office Equip	21,000.00



Send Report to Excel

WHAT WOULD YOU LIKE TO DO WITH THIS REPORT?

☒ Create new worksheet

☐ in new workbook

☐ in existing workbook

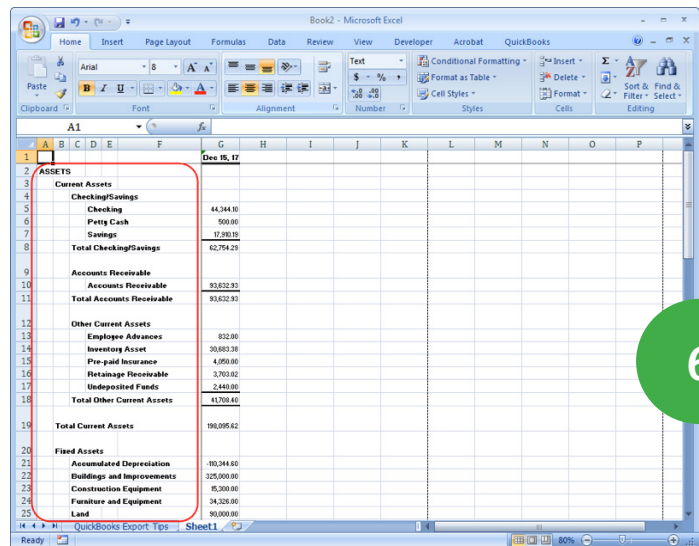
☐ Update an existing worksheet **NEW** [How it works](#)

☐ Replace an existing worksheet

☐ Create a comma separated values (.csv) file

[Advanced...](#)

Export **Cancel** **Help**



Book2 - Microsoft Excel

	A	B	C	D	E	F	G	H	I	J	K	L	M	N	O	P
1							Dec 15, 17									
2							ASSETS									
3							Current Assets									
4							Checking/Savings	44,344.10								
5							Checking	500.00								
6							Petty Cash	17,800.10								
7							Savings	62,754.20								
8							Total Checking/Savings									
9							Accounts Receivable	93,632.93								
10							Total Accounts Receivable	93,632.93								
11							Other Current Assets									
12							Employee Advances	832.00								
13							Inventory Asset	30,883.38								
14							Pre-paid Insurance	4,050.00								
15							Retainage Receivable	3,703.82								
16							Undeposited Funds	2,440.00								
17							Total Other Current Assets	41,708.44								
18							Total Current Assets	189,095.62								
19							Fixed Assets									
20							Accumulated Depreciation	10,344.60								
21							Buildings and Improvements	325,000.00								
22							Construction Equipment	15,300.00								
23							Furniture and Equipment	34,328.00								
24							Land	90,000.00								

- The totals are formulas. So changes made to any of the values also change the total.

In the **Fixed Assets** section, you have about \$433,218.31 in Fixed Assets. But this includes furniture and equipment purchased several years ago for \$34,326.00. Enter what the furniture and equipment is really worth today. Click in the cell to the right of Furniture and Equipment and enter \$15,000. Press **Enter**.

- Now, you have \$413,892.31 in total fixed assets. Obviously, you would not make this change to the **Balance Sheet** in the real world.
- Use any of Excel's features to customize this report. Click the **Microsoft Office** button and select **Exit Excel** to close Excel. Click **No** when asked to save this file.

7

	Dec 15, 17
STUFF WORTH MONEY	
Current Assets	
Checking/Savings	44,344.00
Petty Cash	500.00
Savings	12,880.00
Total Checking/Savings	62,754.00
Accounts Receivable	93,632.93
Total Accounts Receivable	93,632.93
Other Current Assets	
Employee Advances	832.00
Inventory Asset	30,883.38
Pre-paid Insurance	4,050.00
Retainage Receivable	3,793.02
Undeposited Funds	2,440.00
Total Other Current Assets	41,796.40
Total Current Assets	200,995.62
Fixed Assets	
Accumulated Depreciation	-110,344.60
Buildings and Improvements	325,000.00
Construction Equipment	15,306.00
Furniture and Equipment	15,000.00
Land	90,000.00
Vehicles	78,936.91
Total Fixed Assets	413,892.31
Other Assets	
Security Deposits	1,720.00
Total Other Assets	1,720.00
TOTAL ASSETS	615,787.93
LIABILITIES & EQUITY	
Liabilities	
Current Liabilities	
Accounts Payable	26,636.92
Total Accounts Payable	26,636.92



8

	Dec 15, 17
Rock Castle Construction	
Current Assets	
Inventory Asset	30,883.38
Pre-paid Insurance	4,050.00
Retainage Receivable	3,793.02
Undeposited Funds	2,440.00
Total Other Current Assets	41,796.40
Total Current Assets	200,995.62
Fixed Assets	
Accumulated Depreciation	-110,344.60
Buildings and Improvements	325,000.00
Construction Equipment	15,306.00
Furniture and Equipment	15,000.00
Land	90,000.00
Vehicles	78,936.91
Total Fixed Assets	413,892.31
Other Assets	
Security Deposits	1,720.00
Total Other Assets	1,720.00
TOTAL ASSETS	615,787.93
LIABILITIES & EQUITY	
Liabilities	
Current Liabilities	
Accounts Payable	26,636.92
Total Accounts Payable	26,636.92

Excel - Auto Outline Feature

- Excel has an advanced feature called Auto Outline that helps when you collapse and expand reports. While in QuickBooks, scroll down the **Balance Sheet** you ran in the last exercise to the Payroll Liabilities section. Suppose you want to collapse Payroll Liability sub-accounts, but you don't want to collapse other sub-accounts in the spreadsheet.

Click the **Collapse** button. QuickBooks collapses ALL subaccounts on the report.

- Click **Expand**. Microsoft Excel let's you choose which accounts on the report. Click the **Excel** button.

- Choose to **Create new worksheet**.

10

Rock Castle Construction	
Balance Sheet	
As of December 15, 2017	
Other Current Liabilities	
Payroll Liabilities	
Emp. Health Ins Payable	150.00
Federal Withholding	1,364.00
FICA Payable	2,118.82
FUTA Payable	100.00
State Disability Payable	46.13
State Withholding	209.19
SUTA Payable	110.00
Worker's Compensation	1,214.31
Total Payroll Liabilities	5,404.45
Sales Tax Payable	997.63
Total Other Current Liabilities	6,392.08
Total Current Liabilities	29,393.00
Long Term Liabilities	
Loan - Construction Equipment	13,911.32
Loan - Furniture/Office Equip	21,000.00
Loan - Vehicles (Pickup Truck)	22,841.00
Loan - Vehicles (Utility Truck)	19,936.91
Loan - Vehicles (Van)	10,501.47
Mortgage - Office Building	296,283.00
Note Payable - Bank of Americ	2,693.21
Total Long Term Liabilities	386,965.91
Total Liabilities	416,359.91

13. Then choose to **Create new worksheet in new workbook.**
14. Click the **Advanced** button.
15. Click the box to activate the Auto Outline option.
16. Click **OK**.
17. Click **Export**.

16

Advanced Excel Options

QuickBooks Options:
Keep the following format options from QuickBooks:

☒ **F**onts ☐ **S**pace between columns
☒ **C**olors ☒ **R**ow **h**eight

Excel Options:
Turn on the following Excel features:

☒ **A**utoFit (set column width to display all data)
☒ **F**reeze panes (keep headers and labels visible)
☒ **S**how **G**ridlines
☒ **A**uto **O**utline (allows collapsing / expanding)
☐ **A**uto **F**iltering (allows custom data filtering)
☒ **I**nclude QuickBooks Export Guide worksheet with helpful advice
☐ **C**reate backup worksheet during update

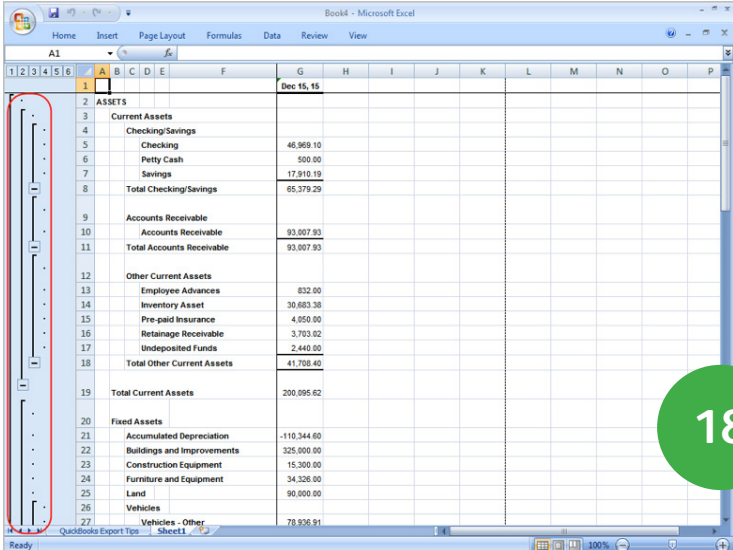
Printing options:
Show report header:

☒ **O**n printed report only
☐ **O**n printed report and screen
☒ **R**epeat **r**ow labels on each page

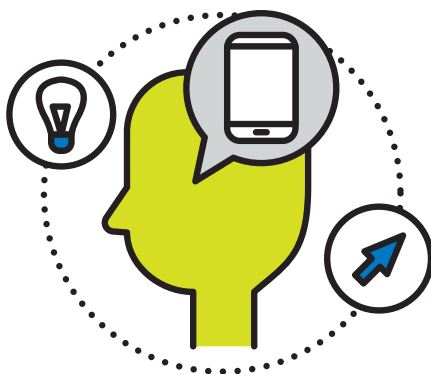
OK
Cancel

18. Now you're in **Microsoft Excel**. Use the "minus" buttons to collapse accounts.
- Click the minus button next to **Checking/Savings** to collapse the accounts. **Savings** to collapse the accounts.

18

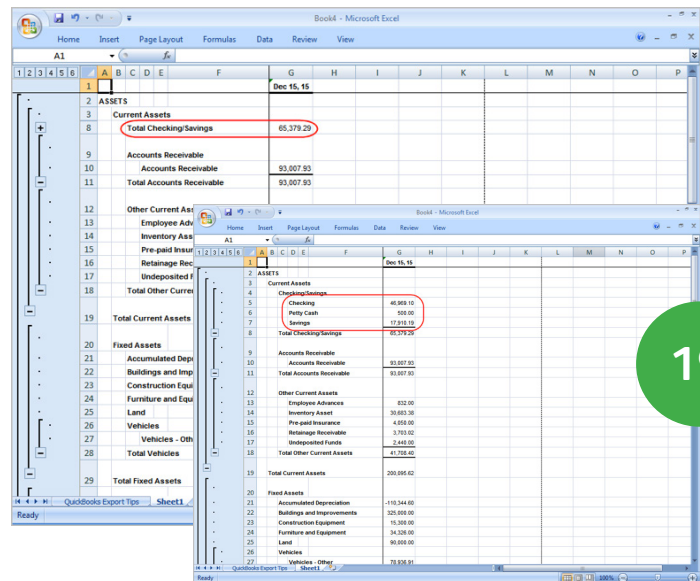


	ASSETS	LIABILITIES
1	ASSETS	
2	Current Assets	
3	Checking/Savings	
4	Checking	46,969.10
5	Petty Cash	500.00
6	Savings	17,910.19
7	Total Checking/Savings	65,379.29
8	Accounts Receivable	
9	Accounts Receivable	93,007.93
10	Total Accounts Receivable	93,007.93
11	Other Current Assets	
12	Employee Advances	832.00
13	Inventory Asset	30,683.38
14	Pre-paid Insurance	4,050.00
15	Retainage Receivable	3,703.02
16	Undeposited Funds	2,440.00
17	Total Other Current Assets	41,708.40
18	Total Current Assets	200,095.62
19	Fixed Assets	
20	Accumulated Depreciation	-110,344.60
21	Buildings and Improvements	325,000.00
22	Construction Equipment	15,300.00
23	Furniture and Equipment	34,326.00
24	Land	90,000.00
25	Vehicles	
26	Vehicles - Other	78,936.91



19. **Checking/Savings** is now collapsed without affecting the rest of the report.

Click the “plus” symbol next to **Checking / Savings** to expand the section.

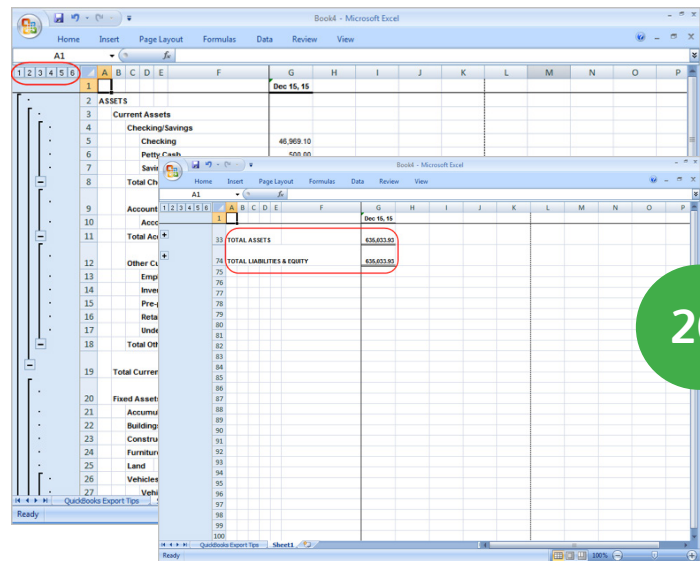


ASSETS		Dec 15, 15
Current Assets		
Total Checking/Savings		65,379.29
Accounts Receivable		93,007.85
Total Accounts Receivable		93,007.85
Other Current Assets		
Employee Adv		632.00
Inventory Asset		39,883.35
Pre-paid Insur		4,650.00
Retainage Rec		3,703.02
Undeposited Funds		2,443.05
Total Other Current Assets		41,708.42
Total Current Assets		200,095.62
Fixed Assets		
Accumulated Dep		(110,344.00)
Buildings and Imp		320,000.00
Construction Equip		15,300.00
Furniture and Equip		36,520.00
Land		98,000.00
Vehicles - Oth		78,858.51
Total Fixed Assets		433,218.51
Total Assets		635,033.93

19

20. The buttons in the upper, left labeled 1 to 6 are the Excel outline symbols.

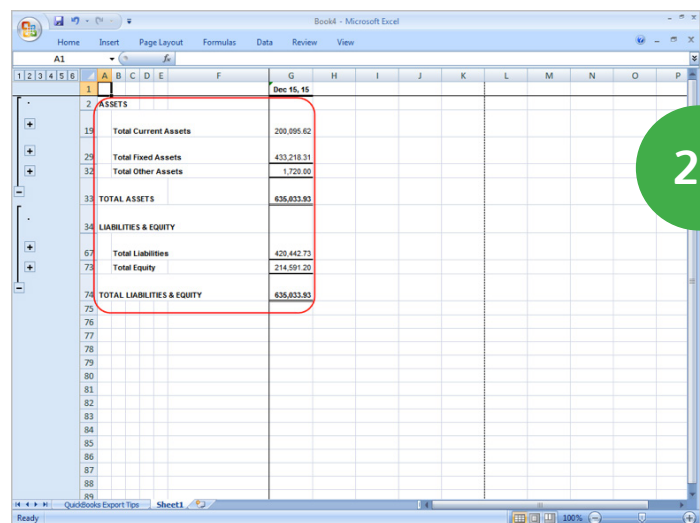
Click the “1” button to display a fully collapsed report showing only **Total Assets** and **Total Liabilities & Equity**.



ASSETS		Dec 15, 15
Total Assets		635,033.93
LIABILITIES & EQUITY		
Total Liabilities		420,442.73
Total Equity		214,591.20
Total Liabilities & Equity		635,033.93

20

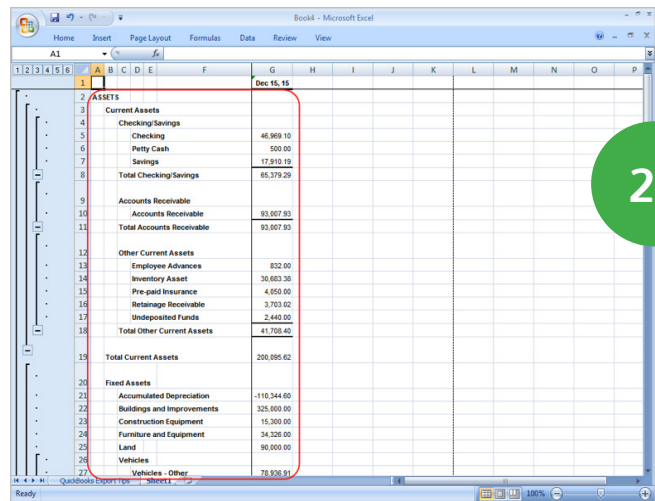
21. Click the “2” button to see more detail on the report.



ASSETS		Dec 15, 15
Total Current Assets		200,095.62
Total Fixed Assets		433,218.51
Total Other Assets		1,720.00
Total Assets		635,033.93
LIABILITIES & EQUITY		
Total Liabilities		420,442.73
Total Equity		214,591.20
Total Liabilities & Equity		635,033.93

21

22. You can click 3-5 to see even more detail.
Click the "6" button to display all the detail on the report.
23. Click the **Microsoft Office button** and select **Exit Excel** to close Excel again. Click **No** when asked to save this file.

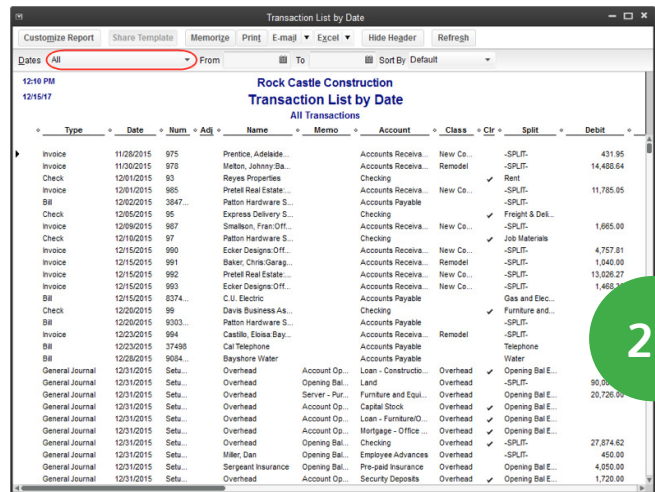


ASSETS		
Current Assets		
Checking Savings	46,969.10	
Checking	500.00	
Petty Cash	17,819.19	
Savings	65,379.29	
Total Checking/Savings		
Accounts Receivable	93,007.93	
Total Accounts Receivable		
Other Current Assets		
Employee Advances	822.00	
Inventory Asset	30,663.38	
Pre-paid Insurance	4,050.00	
Retainage Receivable	3,703.02	
Undeposited Funds	2,440.00	
Total Other Current Assets		
Total Current Assets	206,095.62	
Fixed Assets		
Accumulated Depreciation	-110,344.00	
Buildings and Improvements	325,800.00	
Construction Equipment	15,300.00	
Furniture and Equipment	34,326.00	
Land	90,000.00	
Vehicles		
Total Fixed Assets	354,782.00	

22

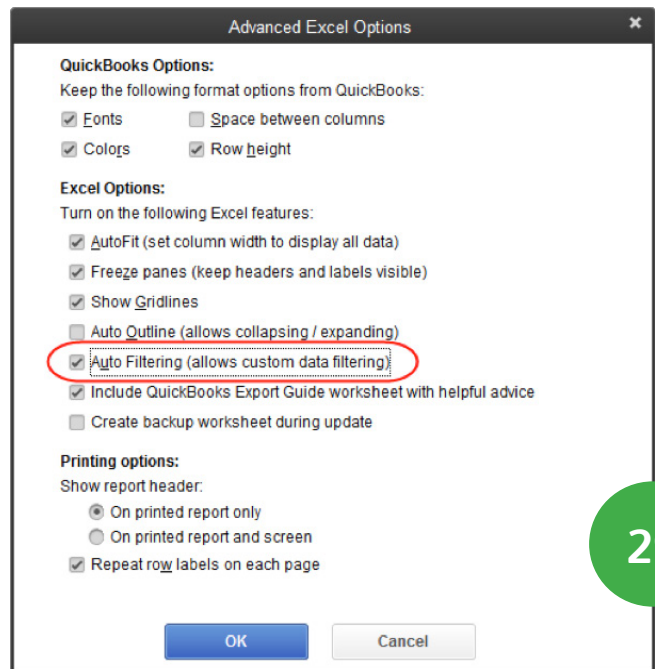
Excel - Filters

24. Excel has report filters that are sometimes faster and easier to use than the QuickBooks filters. To see how these filters work, open a report. Click the Reports menu and select Accountant & Taxes > Transaction List by Date.
25. The **Transaction List by Date** report shows all transactions entered for a specific date range. Change the date range. Click the **Dates** drop-down list and select **All**.
26. Click the **Excel** button and choose to **Create a new worksheet**.
27. Choose to **Create new worksheet** in a new Excel workbook.
28. Click the **Advanced** button.
29. Click the box next to **Auto Outline** to turn this feature off. This is the feature you learned about in the previous exercise. Then click the box next to **Auto Filtering** to turn on the Excel filters.
30. Click **OK**.
31. Click **Export**.



Type	Date	Num	Adj	Name	Memo	Account	Class	Ctr	Split	Debit
Invoice	11/28/2015	975		Prentice, Adelaide		Accounts Receivable	New Co.		-SPLIT	431.95
Invoice	11/28/2015	978		Melton, Johnny Ba...		Accounts Receivable	Remodel		-SPLIT	14,430.64
Check	12/01/2015	93		Reyes Properties		Checking			✓ Rent	
Invoice	12/01/2015	985		Pretel Real Estate		Accounts Receivable	New Co.		-SPLIT	11,785.95
Bill	12/01/2015	3947		Patton Hardware S...		Accounts Payable			-SPLIT	
Check	12/05/2015	95		Express Delivery S...		Checking			✓ Freight & Del...	
Invoice	12/09/2015	987		Smallson, Fran Off...		Accounts Receivable	New Co.		-SPLIT	1,665.00
Check	12/10/2015	97		Patton Hardware S...		Checking			✓ Job Materials	
Invoice	12/15/2015	990		Ecker Designs Off...		Accounts Receivable	New Co.		-SPLIT	4,757.81
Invoice	12/15/2015	991		Baker, Chris Garag...		Accounts Receivable	New Co.		-SPLIT	1,040.00
Invoice	12/15/2015	992		Pretel Real Estate		Accounts Receivable	New Co.		-SPLIT	13,026.27
Bill	12/15/2015	993		Ecker Designs Off...		Accounts Payable	New Co.		-SPLIT	1,468.37
Check	12/15/2015	994		C.U. Electric		Checking			✓ Gas and Elec...	
Bill	12/20/2015	999		Davis Business As...		Accounts Payable			✓ Furniture and...	
Invoice	12/20/2015	993		Patton Hardware S...		Accounts Receivable	Remodel		-SPLIT	
Bill	12/23/2015	994		Castro, Erika Bay...		Accounts Payable			✓ Telephone	
Bill	12/23/2015	37498		Bayshore Water		Accounts Payable			✓ Water	
General Journal	12/31/2015	Setu...		Overhead	Account Op...	Loan - Constructo...	Overhead		✓ Opening Bal E...	
General Journal	12/31/2015	Setu...		Overhead	Account Op...	Land	Overhead		✓ Opening Bal E...	90,000.00
General Journal	12/31/2015	Setu...		Overhead	Account Op...	Server - Fut...	Overhead		✓ Opening Bal E...	29,720.00
General Journal	12/31/2015	Setu...		Overhead	Account Op...	Furniture and Equi...	Overhead		✓ Opening Bal E...	
General Journal	12/31/2015	Setu...		Overhead	Account Op...	Capital Stock	Overhead		✓ Opening Bal E...	
General Journal	12/31/2015	Setu...		Overhead	Account Op...	Loan - Furniture O...	Overhead		✓ Opening Bal E...	
General Journal	12/31/2015	Setu...		Overhead	Account Op...	Mortgage - Office ...	Overhead		✓ Opening Bal E...	
General Journal	12/31/2015	Setu...		Overhead	Account Op...	Checking	Overhead		✓ Opening Bal E...	27,874.62
General Journal	12/31/2015	Setu...		Overhead	Account Op...	Employee Advances	Overhead		✓ Opening Bal E...	450.00
General Journal	12/31/2015	Setu...		Overhead	Account Op...	Pre-paid Insurance	Overhead		✓ Opening Bal E...	4,050.00
General Journal	12/31/2015	Setu...		Overhead	Account Op...	Security Deposits	Overhead		✓ Opening Bal E...	1,720.00

25



Advanced Excel Options

QuickBooks Options:
Keep the following format options from QuickBooks:

☒ Fonts ☐ Space between columns
☒ Colors ☒ Row height

Excel Options:
Turn on the following Excel features:

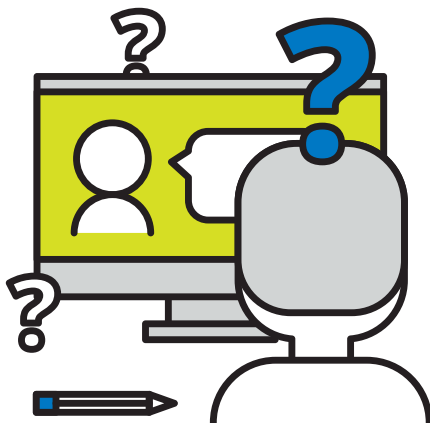
☒ AutoFit (set column width to display all data)
☒ Freeze panes (keep headers and labels visible)
☒ Show Gridlines
☐ Auto Outline (allows collapsing / expanding)
☒ Auto Filtering (allows custom data filtering)
☒ Include QuickBooks Export Guide worksheet with helpful advice
☐ Create backup worksheet during update

Printing options:
Show report header:

☒ On printed report only
☐ On printed report and screen
☒ Repeat row labels on each page

OK Cancel

29



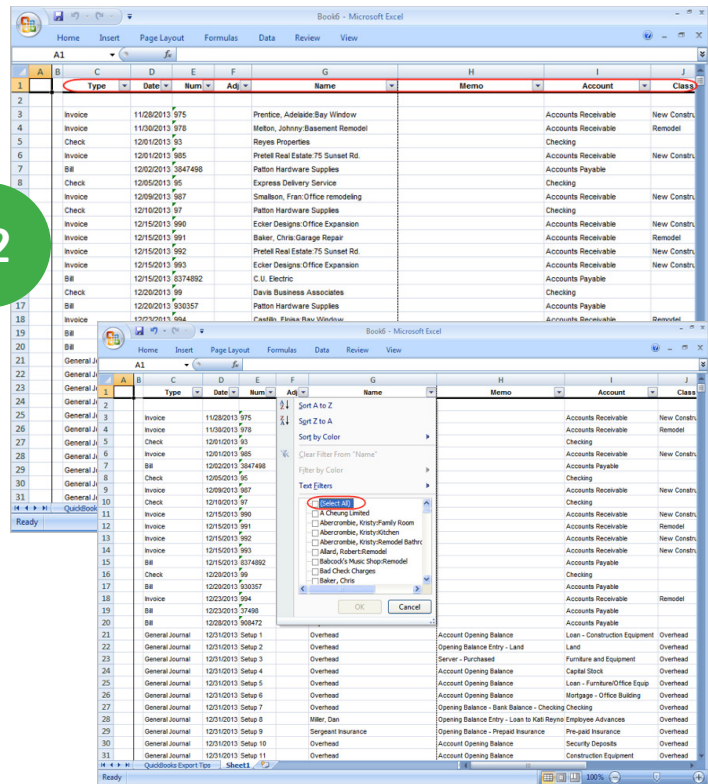
32. The report is now in **Microsoft Excel**. Notice that each column has a drop down list. This indicates that a filter is available for that column.

Suppose you only want to see transactions that include **Vu Contracting**. First, click the **Name** drop down list and click the box next to **Select ALL** to clear the filter.

33. Scroll down, and select **Vu Contracting**.

34. Click **OK**.

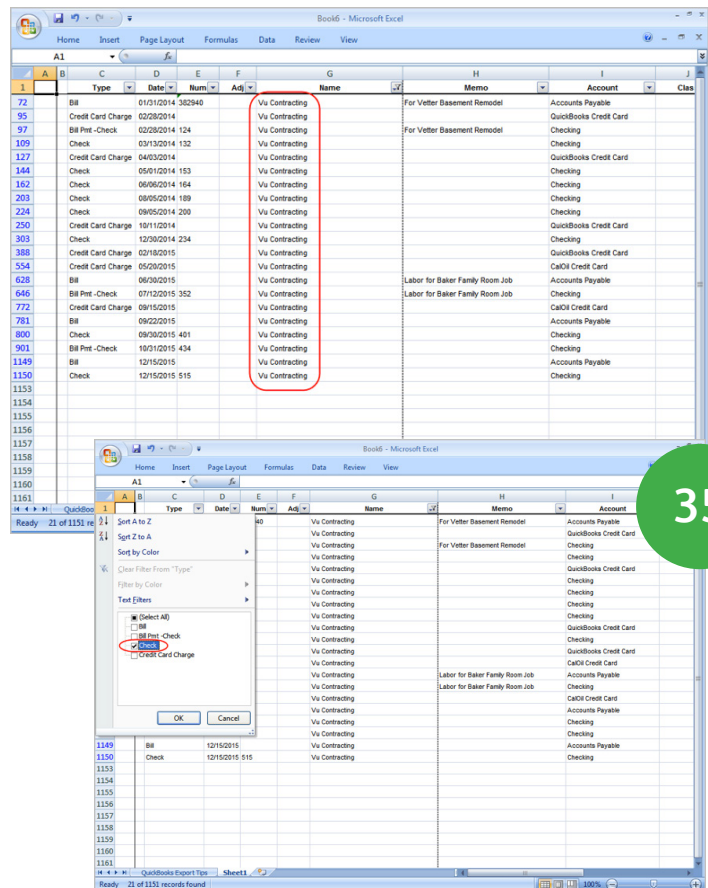
32



35. Now, Excel displays only transactions for that name.

Apply another filter. Suppose you're only interested in checks written to **Vu Contracting**. Click the **Type** drop-down list. Then click the box next to **Select All** to clear the filter. Select **Check**.

36. Click **OK**.



35

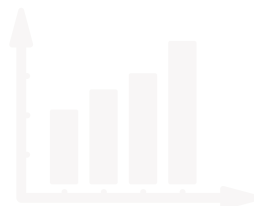
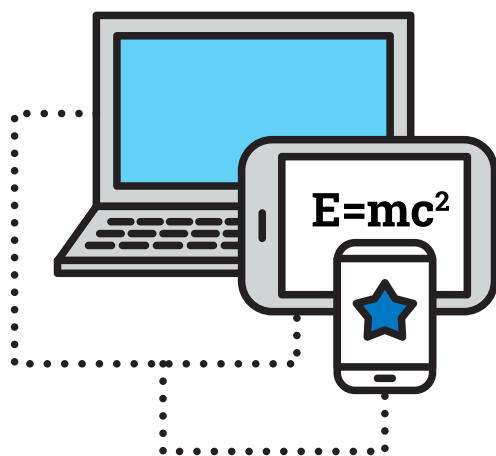




37. You see the result of the new filter immediately. The report shows all checks for **Vu Contracting**.
38. Click the **Microsoft Office button** and select **Exit Excel** to close Excel again. Click **No** when asked to save this file. Microsoft Excel is a powerful program. Use its features to enhance the reporting capabilities of QuickBooks.

	A	B	C	D	E	F	G	H	I	J
			Type	Date	Num	Adj	Name	Memo	Account	Class
109			Check	03/13/2014	132		Vu Contracting			
144			Check	05/01/2014	153		Vu Contracting			
162			Check	06/06/2014	164		Vu Contracting			
203			Check	08/05/2014	189		Vu Contracting			
224			Check	09/05/2014	200		Vu Contracting			
303			Check	12/30/2014	234		Vu Contracting			
800			Check	09/30/2015	401		Vu Contracting			
1150			Check	12/15/2015	515		Vu Contracting			
1153										
1154										
1155										
1156										
1157										
1158										
1159										
1160										
1161										
1162										
1163										
1164										
1165										
1166										
1167										
1168										
1169										
1170										
1171										
1172										
1173										
1174										

37



Practice Exam Questions

Try out these practice questions to get a feel for the types of questions on the QuickBooks Certified User exam. Please note that your performance here does not indicate how you will do on the actual exam. To fully prepare for the exam, closely review the topic areas and objectives.



QuickBooks Setup

1. Which of the following is a reason to create a new company file?

- a. To start over when a company file has many mistakes that are beyond repair.
- b. If the company file has reached the maximum capacity of 1,000 transactions.
- c. To begin recording transactions in a new fiscal year because each company file tracks only one year
- d. QuickBooks cannot create multiple company files

Correct answer: a

2. After creating a new company file how do you change company information, like business name or address?

- a. Choose Edit > Preferences
- b. Choose File > Open Company
- c. Choose File > EasyStep Interview
- d. Choose Company > My Company

Correct answer: d

QuickBooks Utilities and General Product Knowledge

3. Which of the following is NOT a backup option in QuickBooks?

- a. Manually back up the file.
- b. Automatically back up the data file when closing QuickBooks.
- c. Schedule an unattended backup
- d. All of the above are QuickBooks backup options.

Correct answer: d

4. If you choose to “Remove Transactions as of a specific date” from the “Clean Up Company Data” window, what does QuickBooks do?

- a. Removes all payroll transactions that occurred on that date. This is a great way to fix the mistakes a new person made on a particular day.
- b. Removes all transactions while leaving lists, preferences, and service subscriptions intact.
- c. Changes the company’s start date.
- d. Deletes all transactions, as well as user passwords and access privileges.

Correct answer: b

List Management

5. What do the diamonds mean on certain lists (for example, the diamonds to the left of each Customer:Job)?

- a. You are not allowed to delete that entry.
- b. You can click on the diamond and move the list entry to a different location on the list.
- c. There are open transactions related to the list entry.
- d. You cannot move the list entry.

Correct answer: b

6. What is the maximum number of names that can be included on the Names lists in QuickBooks Pro or Premier?

- a. 10,000
- b. 1,000
- c. 2,500
- d. 14,500

Correct answer: d

Items

7. What item type should you use for inventory that you assemble from other items and then sell?

- a. Group
- b. Inventory Part
- c. Inventory Assembly
- d. Non-inventory Part

Correct answer: c

8. Which of the following statements is true concerning items?

- a. You can use one item to represent different services or goods.
- b. Items allow you to track your sales in more detail without cluttering your Chart of Accounts or Profit & Loss.
- c. To create an invoice, you must use an item.
- d. All of the above.

Correct answer: d

List Management

9. When should you create an invoice in QuickBooks?

- a. When a customer purchases goods or services and pays you in cash at the time of the sale
- b. When a customer purchases goods or services and pays you by check or credit card at the time of the sale
- c. When a customer purchases goods or services, but you don't want to record the sale as final
- d. When a customer purchases goods or services but does not pay you at the time of the sale

Correct answer: d

10. When should you use a Sales Receipt in QuickBooks?

- a. To give a customer a receipt for payment of an invoice
- b. To record a customer prepayment or deposit
- c. To record a customer payment at the time of sale
- d. To enter a customer early-payment discount

Correct answer: c

Purchases

11. How do you track accounts payable in QuickBooks?

- a. Enter a bill, and then use the Write Checks window.
- b. Write a check, and then mark it as "pending" until you pay it.
- c. Enter a bill, and then use the Pay Bills window.
- d. You can't track accounts payable.

Correct answer: c

12. What transaction/form do you begin with to enter a vendor credit?

- a. Vendor Credit
- b. Enter Bill
- c. Pay Bills window
- d. Receive Vendor Credit

Correct answer: b



Payroll

13. When printing paychecks, what is the preferred check style to give an employee a paystub?

- a. Standard
- b. Wallet
- c. Payroll
- d. Voucher

Correct answer: d

14. When setting up a new employee, what is important about the Payroll Info tab?

- a. Whatever you enter/see in this window affects each paycheck, unless you change the information on the paycheck itself.
- b. It identifies the state subject to withholding and the state where the employee lives (usually the same).
- c. You enter Emergency Contact information, which is required by law in many states.
- d. This tab tracks an employee's age and gender necessary for tax calculations.

Correct answer: a

Reports

15. How do you create a memorized group of reports?

- a. Click the **Report Center** icon. Then click the **Create New Report Group** button.
- b. Open the **Memorized Report List** and then click **Memorized Report > New Group**.
- c. Choose **File > Reports > Memorized Reports > Create Group**.
- d. Open the Group Reports List and then click **Groups > New Group**.

Correct Answer: b

16. What is the purpose of subaccounts?

- a. Track departments or locations efficiently
- b. Track finances in more detail by grouping accounts in a logical fashion and showing a subtotal for those accounts
- c. To show different Account Types together in one section of a report
- d. None of the above

Correct answer: b

Basic Accounting

17. When you run Financial Statements in QuickBooks, what bookkeeping basis can you use to view the report?

- a. Cash Basis.
- b. Accrual Basis.
- c. You can switch the bookkeeping basis if you want.
- d. All of the above.

Correct answer: d

18. What are the 2 main Financial Statements you can run from the "Company and Financial" category of reports?

- a. Balance Sheet, Profit and Loss
- b. Balance Sheet, Statement of Operations
- c. Profit and Loss, Statement of Operations
- d. Statement of Operations, Statement of Financial Position

Correct answer: a

Customization/Saving Time

19. Suppose your address information appears on the upper left of your invoice and you want to move it to the lower right. How would you do this?

- a. Use the QuickBooks Print Engine Editor
- b. Use the Layout Designer
- c. Open the Financial Statement Designer
- d. Use the Custom Form Designer

Correct answer: b

20. You need to enter the same transaction each month (for example, an insurance payment). How can you automate this process in QuickBooks?

- a. While the transaction is on the screen, choose **Edit > Memorize check** (or the name of the transaction).
- b. Choose **File > Automate Transactions** and use the wizard to set up the automated checks or other transactions.
- c. From Preferences, choose **General** and click **Set Up Automated Transactions**.
- d. While the transaction is on the screen, click the **Recur** button.

Correct answer: a





